



# Chain Link Fabric 12 1/2, 11 1/2, 11 Gauge

## CHAIN LINK FABRIC - GALVANIZED

- ONLY THE HEIGHTS, GAUGES, AND SELVAGES LISTED ARE STANDARD
  - NON-STANDARD ITEMS AVAILABLE UPON REQUEST
  - SPECIAL GALVANIZING — INQUIRE FOR PRICE
  - CUT CHARGE FOR BROKEN ROLL

### PRICE PER 100 LINEAR FEET

Height	Item#	Standard Selvage	Weight in Pounds Per 100 ft.	Less than 2,000 lbs.	2,000 lbs. to 9,999 lbs.	10,000 lbs. and Over
--------	-------	---------------------	------------------------------------	----------------------------	--------------------------------	----------------------------

#### 12 1/2 Gauge, 2 1/4" Mesh

36"	30999-10	K&K	96			
48"	31000-10	K&K	116			
60"	31101-10	K&K	148			
72"	31102-20	B&K	170			

#### 11 1/2 Gauge, 2 1/4" Mesh

36"	31103-10	K&K	125			
42"	31135-10	K&K	145			
48"	31104-10	K&K	155			
60"	31105-10	K&K	200			
72"	31106-20	B&K	235			

#### 11 Gauge, 2" Mesh

36"	31203-10	K&K	142			
42"	31235-10	K&K	163			
48"	31204-10	K&K	184			
60"	31205-10	K&K	235			
72"	31206-20	B&K	285			
72"	31206-CT**	K&K	285			
84"	31207-20	B&K	330			
96"	31208-20	B&K	380			
120"	31210-20	B&K	475			
144"	31212-20	B&K	565			

**\*\* IN CALIFORNIA 6' K&K IS STOCKED WITH 21 1/2 DIAMONDS ONLY**  
 Add .18 per square foot to 9 & 11 GA. prices for 2 oz. zinc, 2" mesh only

#### TENNIS COURT, 1 3/4" Mesh

120"	32110-10	K&K	584			
144"	32112-10	K&K	684			



# Chain Link Fabric 11, 9 Gauge

## CHAIN LINK FABRIC — GALVANIZED

- ONLY THE HEIGHTS, GAUGES, AND SELVAGES LISTED ARE STANDARD
- NON-STANDARD ITEMS AVAILABLE UPON REQUEST
- SPECIAL GALVANIZING — INQUIRE FOR PRICE • CUT CHARGE FOR BROKEN ROLL

### PRICE PER 100 LINEAR FEET

Height	Item#	Standard Selvage	Weight in Pounds Per 100 ft.	Less than 2,000 lbs.	2,000 lbs. to 9,999 lbs.	10,000 lbs. and Over
--------	-------	---------------------	------------------------------------	----------------------------	--------------------------------	----------------------------

#### 11 Gauge, 1 1/4" Mesh

60"	31239-10	K&K	438			
72"	31240-10	K&K	525			

#### 11 Gauge, 1" Mesh

72"	31226-10	K&K	600			
-----	----------	-----	-----	--	--	--

#### 9 Gauge, 2" Mesh

36"	31303-10	K&K	218			
42"	31335-10	K&K	255			
48"	31304-10	K&K	291			
60"	31305-10	K&K	364			
72"	31306-20	B&K	437			
84"	31307-20	B&K	510			
96"	31308-20	B&K	582			
120"	31310-20	B&K	728			
144"	31312-20	B&K	874			

Other Mesh Sizes available with 11 GA. & 9 GA. wire  
1", 1 1/4", 1 3/4" — Call for pricing.

• Mini-mesh: Call for pricing on 1/4", 3/8", 1/2", 5/8" mesh sizes.

#### 6 Gauge, 2" Mesh

72"	31356-20	B&K	810			
-----	----------	-----	-----	--	--	--

• SELVAGES AVAILABLE: K&K (10) B&K (20) B&B (30)

All specifications for sizes of wire, mesh size, or zinc coating must be requested and quoted before acceptance of an order. For vinyl coated fabric, see COLOR SYSTEMS section.

Add .18 per square foot to 9 & 11 GA. prices for 2 oz. zinc, 2" mesh only.



**PRIVACY PLASTICLINK**

- 9 Gauge — Galvanized wire with Plastic Privacy Slats
- Mesh — Approximately 3 1/2" x 5 1/2"
- Sold in 25' Rolls Only

**Standard Colors of Plastic Privacy Slats:**

Brown (10)                      Green (30)  
 Redwood (40)                Beige (50)  
 Grey (90)

Other colors and heights are available upon request  
Call for pricing and availability

“Spaces” after item# indicate color selected

**KK - No Staples**

Slats are 1" shorter than height of fence

Height	Item#	Weight Per foot	Less Pallet	Pallet Price Per foot
60"	50549-__	5 lbs.		
72"	50501-__	6 lbs.		
84"	50503-__	7 lbs.		
96"	50502-__	8 lbs.		
120"	50550-__	10 lbs.		

Slats are full height

Height	Item#	Weight Per foot	Less Pallet	Pallet Price Per foot
60"	50549-__5	5 lbs.		
72"	50501-__5	6 lbs.		
84"	50503-__5	7 lbs.		
96"	50502-__5	8 lbs.		
120"	50550-__5	10 lbs.		

**Bow/Knuckle - Staples**

Height	Item#	Weight Per foot	Less Pallet	Pallet Price Per foot
60"	50549-__9	5 lbs.		
72"	50501-__9	6 lbs.		
84"	50503-__9	7 lbs.		
96"	50502-__9	8 lbs.		
120"	50550-__9	10 lbs.		

**PLASTICLINK**

- 9 Gauge — Galvanized wire with Plastic Slats
- Mesh — Approximately 3 1/2" x 5 1/2"
- Sold in 25' Rolls Only

Height	Item#	Weight Per foot	Less Pallet	Pallet Price Per foot
72"	50345	6 lbs.		
96"	50347	8 lbs.		

**Standard Colors of Plastic Slats:**

Brown (10)                      Green (30)  
 Redwood (40)                Beige (50)  
 Grey (90)

Other colors and heights are available upon request  
Call for pricing and availability

**WOODLINK**

- 9 Gauge — Galvanized before weaving wire with Wood Slats
- Mesh — Approximately 3 1/2" x 5 1/2"
- Sold in 25' Rolls Only

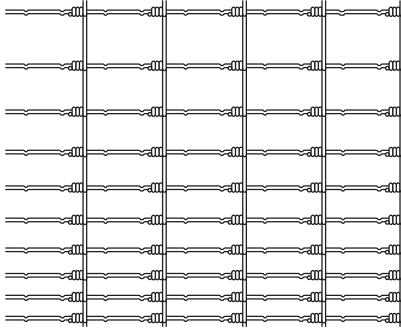
Height	Item#	Weight Per foot	Less Pallet	Pallet Price Per foot
72"	50306-10	7.35 lbs		
96"	50308-10	9.80 lbs		

**ALSO AVAILABLE**

WOODLINK and PLASTICLINK: available with 9 gauge, or 10 gauge core vinyl coated, bonded wire

- SOLD IN 25' ROLLS ONLY

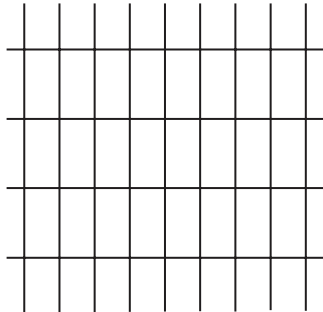
### DEER & RABBIT FENCE, 14 1/2 GA, 165 FT. ROLL



Height	Item#	Weight	Price
4'	2048-6-14 1/2	60348	85 lbs.
5'	2360-6-14 1/2	60360	99 lbs.
6'	2672-6-14 1/2	60372	114 lbs.

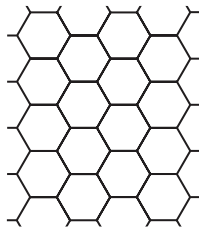
### WELDED WIRE 14 GA, 2 x 4, 100 FT. ROLL (50' ROLLS AVAILABLE)

3'	60584	48 lbs.
4'	60579	64 lbs.
5'	60580	80 lbs.
6'	60583	96 lbs.



### WELDED WIRE 12 1/2 GA, 2 x 4, 100 FT. ROLL

3'	60536-100	72 lbs.
4'	60548-100	96 lbs.
5'	60560-100	119 lbs.
6'	60572-100	141 lbs.



### POULTRY NETTING 1" MESH 20 GA, 150 FT. ROLL

36"	32502	46 lbs.
48"	32504	62 lbs.
60"	32505	77 lbs.
72"	32506	92 lbs.

2" Mesh also available — call for quotation

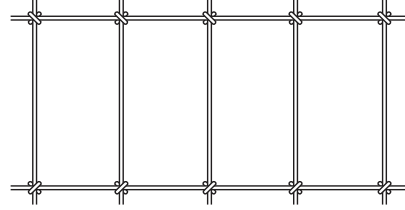
### WIRE CORRAL PANELS 68" x 288"

68"	65175	112 lbs.
-----	-------	----------

### NON-CLIMB — WOVEN HORSE FENCE, 12 1/2 GA, 100 FT. ROLL

Height	Item#	Weight	Price
3'	1036-2-12 1/2	60400	95 lbs.
4'	1348-2-12 1/2	60401	122 lbs.
5'	1660-2-12 1/2	60402	151 lbs.
6'	1972-2-12 1/2	60403	179 lbs.

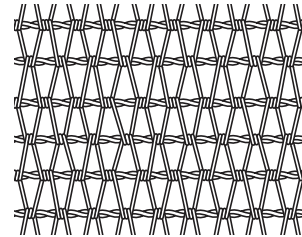
• Commercial zinc coating



### “V” MESH — SPECIFICATION I-2, 165 FT. ROLL

50"	60450	253 lbs.
58"	60458	294 lbs.
72"	60472	356 lbs.

• Commercial zinc coating



### WOVEN FIELD FENCE, HINGE JOINT 12 1/2 GA, 330 FT. ROLL

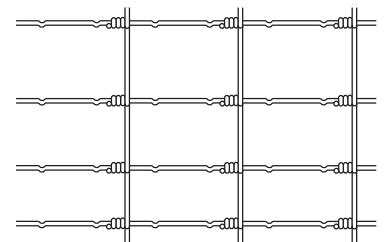
Description	Item#	Wt. / lbs.	Number of Stay Wire		Stay Wire Gauge	Top & Bottom Wire Gauge	Price
			Line Wires	Spacing			
832-6-12 1/2	60232-10	148	8	6	12 1/2	10	

• Meets ASTM A116, Class 1 zinc coating

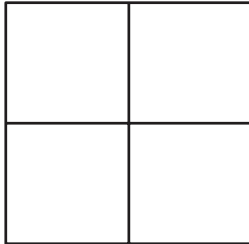
The following are available in NON-SPEC commercial zinc coating

832-6-12 1/2	60232	148	8	6
939-6-12 1/2	60239	168	9	6
1047-6-12 1/2	60247	190	10	6

Price



### 2 x 2 Mesh

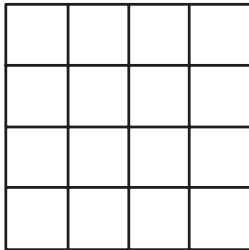


1/2" x 1/2" Openings

### 2 x 2 Mesh

Height	Item#	Opening	Size	Weight	Price
24" x 100'	60513	1/2"	19 ga.	43 lbs.	
30" x 100'	60515	1/2"	19 ga.	54 lbs.	
36" x 100'	60514	1/2"	19 ga.	65 lbs.	
48" x 100'	60525	1/2"	19 ga.	97 lbs.	

### 4 x 4 Mesh



1/4" x 1/4" Openings

### 4 x 4 MESH

24" x 100'	60520	1/4"	23 ga.	38 lbs.	
30" x 100'	60518	1/4"	23 ga.	57 lbs.	
36" x 100'	60517	1/4"	23 ga.	69 lbs.	
48" x 100'	60519	1/4"	23 ga.	75 lbs.	