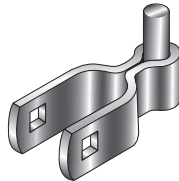


GATE FRAME HINGES Without Bolts



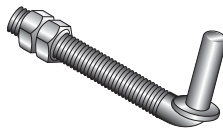
Size	Item#	Sack Qty.	Sack Weight	Less Sack Price Each	Sack Price Each
1 3/8" x 1/2"	12521	100	40 lbs.		
1 3/8" x 5/8"	12522	100	40 lbs.		
3/8" x 2" bolt & nut required					
1 5/8" x 1/2"	12523	50	30 lbs.		
1 5/8" x 5/8"	12524	50	30 lbs.		
1 7/8" x 5/8"	12525	50	35 lbs.		
3/8" x 2 1/4" bolt & nut required					

POST HINGES Without Bolts (3/16" x 1 1/4" band)



1 3/8" x 1/2"	12621	50	32 lbs.		
1 3/8" x 5/8"	12622	50	32 lbs.		
3/8" x 2" bolt & nut required					
1 5/8" x 1/2"	12623	50	34 lbs.		
1 5/8" x 5/8"	12624	50	34 lbs.		
1 7/8" x 1/2"	12625	50	40 lbs.		
1 7/8" x 5/8"	12626	50	40 lbs.		
3/8" x 2 1/4" bolt & nut included					
2 3/8" x 1/2"	12627	50	45 lbs.		
2 3/8" x 5/8"	12628	50	45 lbs.		
3/8" x 3" bolt & nut required					
2 7/8" x 5/8"	12629	50	58 lbs.		
3/8" x 3 1/2" bolt & nut required					

HINGE HANGER BOLTS



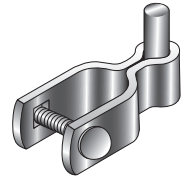
1/2" x 4 1/2"	12801	250	100 lbs.		
1/2" x 6"	12802	250	125 lbs.		
5/8" x 4 1/2"	12803	125	84 lbs.		
5/8" x 6"	12804	100	87 lbs.		
5/8" x 8"	12805	100	96 lbs.		
5/8" x 10"	12806	100	113 lbs.		
5/8" x 12"	12807	100	127 lbs.		

GATE FRAME HINGES Bolts included



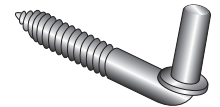
Size	Item#	Sack Qty.	Sack Weight	Less Sack Price Each	Sack Price Each
1 3/8" x 1/2"	12501	100	40 lbs.		
1 3/8" x 5/8"	12502	100	40 lbs.		
3/8" x 2" bolt & nut included					
1 5/8" x 1/2"	12503	50	30 lbs.		
1 5/8" x 5/8"	12504	50	30 lbs.		
1 7/8" x 5/8"	12505	50	35 lbs.		
3/8" x 2 1/4" bolt & nut included					

POST HINGES Bolts included (3/16" x 1 1/4" band)



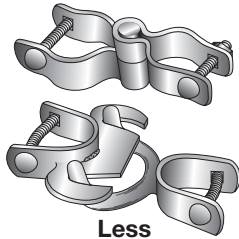
1 3/8" x 1/2"	12601	50	32 lbs.		
1 3/8" x 5/8"	12602	50	32 lbs.		
3/8" x 2" bolt & nut included					
1 5/8" x 1/2"	12603	50	34 lbs.		
1 5/8" x 5/8"	12604	50	34 lbs.		
1 7/8" x 1/2"	12605	50	40 lbs.		
1 7/8" x 5/8"	12606	50	40 lbs.		
3/8" x 2 1/4" bolt & nut included					
2 3/8" x 1/2"	12607	50	45 lbs.		
2 3/8" x 5/8"	12608	50	45 lbs.		
3/8" x 3" bolt & nut included					
2 7/8" x 5/8"	12609	50	58 lbs.		
3/8" x 3 1/2" bolt & nut included					

HINGE HANGER BOLTS, LAG THREAD



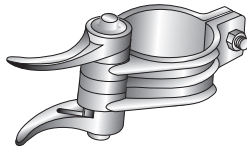
1/2" x 4 1/2"	12821	250	60 lbs.		
1/2" x 6"	12822	125	60 lbs.		
5/8" x 4 1/2"	12823	125	59 lbs.		
5/8" x 6"	12824	125	70 lbs.		

AUTO CLOSING HINGE Gravity



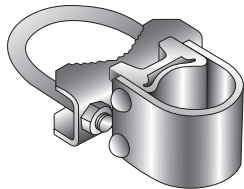
Size	Item#	Sack Qty.	Sack Weight	Less Sack Price Each	Sack Price Each
1 7/8" x 1 3/8"	12701	25	75 lbs.		
2 3/8" x 1 3/8"	12702	25	75 lbs.		
2 3/8" x 1 5/8"	12713	25	80 lbs.		
2 7/8" x 1 3/8"	12703	25	85 lbs.		
2 7/8" x 1 5/8"	12718	25	90 lbs.		
Flat wall x 1 3/8"	12704	25	75 lbs.		

AUTO GATE CLOSER SPRING



1 3/8" x 1 7/8"	12711	12	10 lbs.
1 3/8" x 2 3/8"	12712	12	12 lbs.

BULLDOG HINGE Pressed Steel



2 3/8" x 1 5/8" or x 1 7/8"	16900	10	32 lbs.
2 7/8" x 1 5/8" or x 1 7/8"	16902	10	33 lbs.
4" x 1 5/8" or x 1 7/8"	16903	10	37 lbs.
6 5/8" x 1 5/8" or x 1 7/8"	16906	4	24 lbs.
Flat back	16912	10	55 lbs.

ROUND POST HINGE Tension Adjustable, Self-Closing

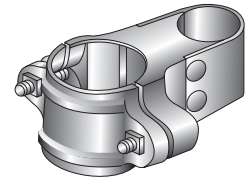


Size	Item#	Qty.	Weight	Price
5" x 4 1/8"	49005	1 pr	2.5 lbs.	NA

Price per pair

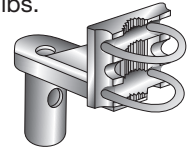
For pricing and more information on this and other Tru•Close hinges, see page 12 in Hinges & Latches in the IRON section.

INDUSTRIAL GATE HINGE Galvanized Iron & Steel



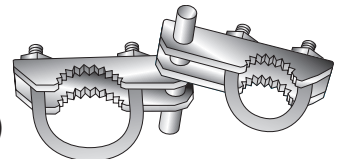
Size	Item#	Sack Qty.	Sack Weight	Less Sack Price Each	Sack Price Each
2 3/8" x 1 5/8" or x 1 7/8"	16800	10	53 lbs.		
2 7/8" x 1 5/8" or x 1 7/8"	16801	10	58 lbs.		
3 1/2" x 1 5/8" or x 1 7/8"	16802	10	60 lbs.		
4" x 1 5/8" or x 1 7/8"	16803	10	68 lbs.		
6 5/8" x 1 5/8" or x 1 7/8"	16804	4	68 lbs.		
8 5/8" x 1 5/8" or x 1 7/8"	16805	4	76 lbs.		
P. S. Nose piece 1 5/8"	16811	20	100 lbs.		
P. S. Nose piece 1 7/8"	16812	20	100 lbs.		

INDUSTRIAL GATE HINGE 180° Attachment



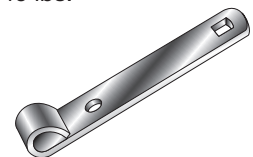
1 5/8" x 1 7/8" adapter	16810	10	60 lbs.
1 5/8" ball plug	16813	50	25 lbs.
1 7/8" ball plug	16814	50	33 lbs.

INDUSTRIAL GATE HINGE 180° Galv. Pressed Steel (Fits 1 5/8" or 1 7/8" frame)



2 3/8"	14101	10	36 lbs.
2 7/8"	14102	10	36 lbs.
3 1/2"	14103	10	40 lbs.
4"	14104	10	42 lbs.
4 1/2"	14105	10	45 lbs.
6 5/8"	14106	4	28 lbs.
8 5/8"	14107	4	40 lbs.

STRAP HINGE For wood gate to pipe post



6" x 1/2"	12901	250	103 lbs.
8" x 5/8"	12902	125	95 lbs.

FORK LATCH Galvanized Pressed Steel Includes bolt



Size	Item#	Sack Qty.	Sack Weight	Less Sack Price Each	Sack Price Each
1 3/8" x 1 7/8"	13002	25	23 lbs.		
1 3/8" x 2 3/8"	13003	25	24 lbs.		
1 3/8" x 2 7/8"	13004	25	25 lbs.		
1 5/8" x 1 7/8"	13005	25	25 lbs.		
1 5/8" x 2 3/8"	13006	25	25 lbs.		
1 5/8" x 2 7/8"	13007	25	25 lbs.		
1 5/8" x 4"	13009	25	29 lbs.		

FORK LATCH Galvanized Iron



1 3/8" x 1 3/8"	13101	25	36 lbs.		
1 3/8" x 1 7/8"	13102	25	37 lbs.		
1 3/8" x 2 3/8"	13103	25	37 lbs.		
1 3/8" x 2 7/8"	13104	25	38 lbs.		
1 3/8" x 3 1/2"	13105	25	39 lbs.		
1 3/8" x 4"	13106	25	40 lbs.		
1 5/8" x 1 7/8"	13107	25	40 lbs.		
1 5/8" x 2 3/8"	13108	25	41 lbs.		
1 5/8" x 2 7/8"	13109	25	42 lbs.		
1 5/8" x 3 1/2"	13114	25	45 lbs.		
1 5/8" x 4"	13110	25	49 lbs.		
1 7/8" x 1 7/8"	13111	25	40 lbs.		
1 7/8" x 2 3/8"	13115	25	40 lbs.		
1 7/8" x 2 7/8"	13112	25	41 lbs.		
1 7/8" x 3 1/2"	13116	25	45 lbs.		
1 7/8" x 4"	13113	25	49 lbs.		

FORK LATCH Special, Pressed Steel, Galv., assembled with bolts



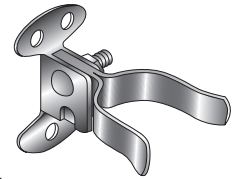
1 3/8" x 1 3/8"	13021	25	17 lbs.		
1 7/8" x 1 3/8"	13022	25	21 lbs.		
2 3/8" x 1 3/8"	13023	25	22 lbs.		

FORK LATCH Sand Cast Aluminum



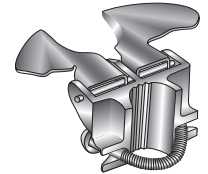
Size	Item#	Sack Qty.	Sack Weight	Less Sack Price Each	Sack Price Each
1 3/8" x 1 3/8"	13201	25	15 lbs.		
1 7/8" x 1 3/8"	13202	25	18 lbs.		
2 3/8" x 1 3/8"	13203	25	19 lbs.		

FLATBACK FORKLATCH Pressed Steel



1 3/8" fork	13204	25	15 lbs.		
-------------	-------	----	---------	--	--

BUTTERFLY LATCH Clamps to gate frame



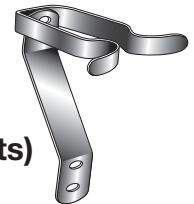
1 7/8" x 1 3/8"	13301	25	25 lbs.		
2 3/8" x 1 3/8"	13302	25	25 lbs.		
2 3/8" x 1 5/8"	13302-10	25	30 lbs.		

BUTTERFLY LATCH Flat back for wood post



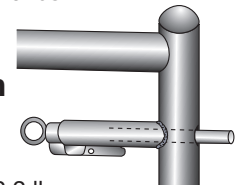
1 3/8"	13321	25	25 lbs.		
--------	-------	----	---------	--	--

SPRING LATCH Pressed Steel (without bolts)



1 3/8" frame	13501	25	20 lbs.		
--------------	-------	----	---------	--	--

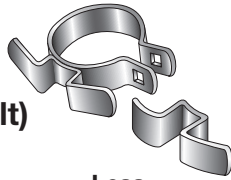
GATE LATCH - Uni•Latch Round Frame



UL-101	15991	10	2.2 lbs.		
Weld-on					
UL-104	15997	10	2.2 lbs.		
Bolt-on					

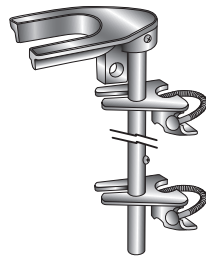
• For Square Frames see the SPECIAL Section, page 4

LATCH CATCH Pressed Steel (without bolt)



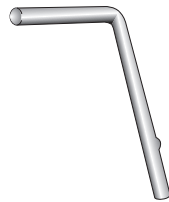
Size	Item#	Sack Qty.	Sack Weight	Less Sack Price Each	Sack Price Each
1 7/8" O.D.	13604	250	85 lbs.		
2 3/8" O.D.	13605	250	90 lbs.		
Universal	13606	250	43 lbs.		

LATCH ASSEMBLY Residential Double Drive (1 3/8" frame)



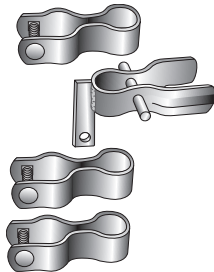
1 3/8" x 36"	13701	10	31 lbs.
1 3/8" x 48"	13702	10	35 lbs.
Guide w/bolt	13703	20	7 lbs.

DROP RODS - Galvanized (guides not included)



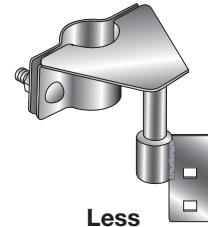
1/2" x 36"	13802	25	55 lbs.
1/2" x 44"	13803	25	63 lbs.

LATCH ASSEMBLY Industrial Double Gate



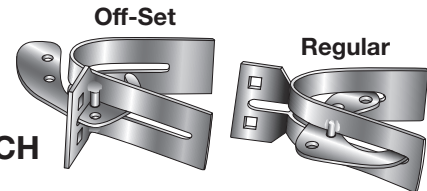
Fork w/3 guides & bolts:	(Drop rod not included)		
1 5/8"	14201	5	24.0 lbs.
1 7/8"	14202	5	24.9 lbs.
Fork only	14221	5	7.8 lbs.
Guides only: 1 5/8"	14241	15	14.4 lbs.
Guides only: 1 7/8"	14242	15	15.8 lbs.

ROLO LATCH For Rolling Gates (without bands)



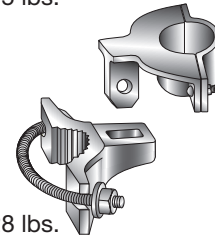
Size	Item#	Sack Qty.	Sack Weight	Less Sack Price Each	Sack Price Each
1 5/8" - 1 7/8"	13303	10	25 lbs.		

LOCK-N-LATCH



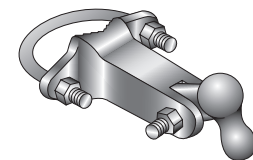
Off-Set	13305	10	15 lbs.
Regular	13306	10	15 lbs.

FROST FREE GATE LATCH



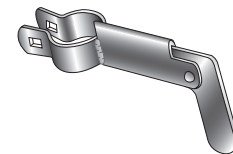
1 5/8"	13319	10	28 lbs.
1 7/8"	13320	10	30 lbs.

GATE HOLDBACK Galvanized Iron



1 5/8" or 1 7/8"	14302	5	13 lbs.
------------------	-------	---	---------

GATE HOLDBACK Pressed Steel



1 5/8"	14305	20	20 lbs.
--------	-------	----	---------

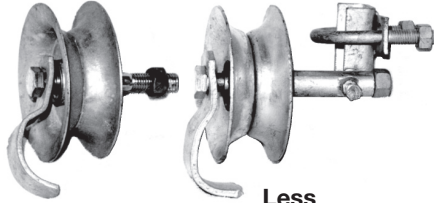
CENTER STOP Galvanized Iron



7 1/8" diameter	14245	5	18 lbs.
-----------------	-------	---	---------

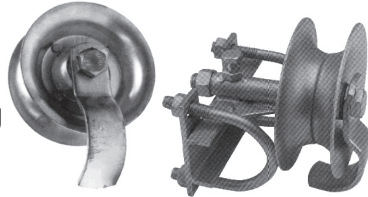
SAFETY PIPE TRACK WHEELS

Pressed Steel



Size	Item#	Sack Qty.	Sack Weight	Less Sack Price Each	Sack Price Each
5" wheel	14800	10	29 lbs.		
5" w/clamp on brkt	14805	4	18 lbs.		
7" w/clamp on brkt	14780	4	25 lbs.		

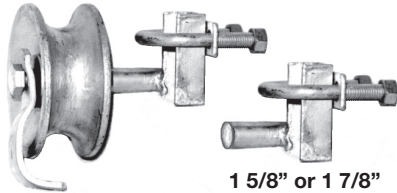
Pressed Steel with Delrin Bushing



5"	14800-DEL	10	23 lbs.		
5" *	14805-DEL	10	50 lbs.		

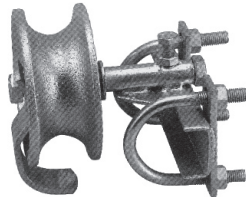
* W/Clamp-on double bracket

Galvanized Iron



5" w/clamp-on brkt	14811	4	24 lbs.		
Industrial gate roller bracket only	14812	10	16 lbs.		

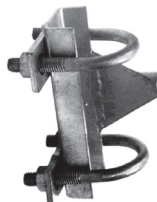
Galvanized Iron with double bracket & Delrin Bushing



5"	14811-DEL	10	53 lbs.		
----	-----------	----	---------	--	--

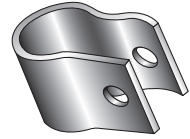
Pipe track roller includes the double bracket and is sold as a unit

Double Bracket only



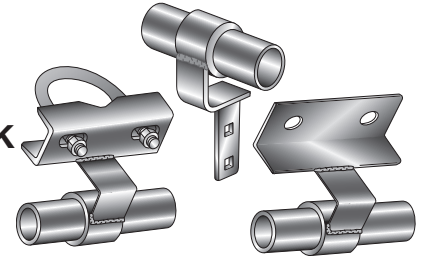
Universal	14812-DEL	10	26 lbs.		
-----------	-----------	----	---------	--	--

CLAMP ON BRACKET Pressed Steel



Size	Item#	Sack Qty.	Sack Weight	Less Sack Price Each	Sack Price Each
1 5/8"	14802	25	11 lbs.		
1 7/8"	14806	25	13 lbs.		

SAFETY TRACK BRACKETS



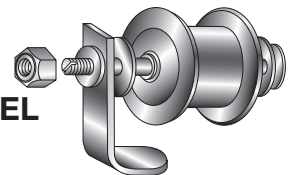
With U-bolts

1 7/8" or 1 5/8"	14910	20	51 lbs.		
2 7/8" or 2 3/8"	14912	20	53 lbs.		
4"	14916	20	55 lbs.		

Flat wall	14913	20	38 lbs.		
-----------	-------	----	---------	--	--

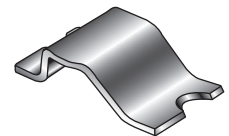
Band type	14914	20	23 lbs.		
-----------	-------	----	---------	--	--

CHANNEL TRACK WHEEL Galvanized Iron



3 1/2"	14804	6	18 lbs.		
--------	-------	---	---------	--	--

TRACK SPACERS Channel Track



All sizes	15001	25	6 lbs.		
-----------	-------	----	--------	--	--

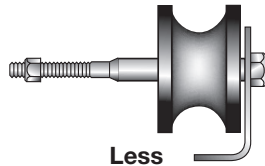
CHANNEL TRACK Galvanized



1" x 2" x 3/16"	15101	20	2.90 lbs.	N/A	
-----------------	-------	----	-----------	-----	--

• Available in 20 foot lengths

HEAVY DUTY PLASTIC 1 5/8" Pipe Track Wheel

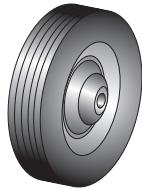


Size	Item#	Sack Qty.	Sack Weight	Less Sack Price Each	Sack Price Each
------	-------	-----------	-------------	----------------------	-----------------

4" Plastic wheel 14711-20 4 12 lbs.

- Wheel is maintenance free and will not split apart, rated for 350 lbs.

GROUND WHEELS Ball Bearing (P. S. Hub)



6" x 5/8"	14702	6	12 lbs.
8" x 5/8"	14704	6	18 lbs.

Includes Axle

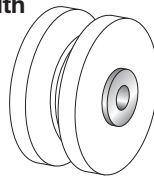
EVERLAST RUBBER WHEEL



6" x 5/8" axle	14752	5	18 lbs.
8" x 5/8" axle	14754	5	20 lbs.

- Tested to exceed 5,000 lbs. — 2" tire width

V-GROOVE NYLON WHEEL



- 4" Diameter 14692 4 5 lbs. *
- Recommended on light weight gates for quiet operation
 - 1/2" diameter axle with lubricated brass bushing
 - * SEE IRON SECTION FOR PRICE —

V-GROOVE WHEELS Galvanized Iron



With Steel Roller Bearing — Includes Axle

4" dia 1 1/2" w	14718	4	20 lbs.
4" dia 2 1/2" w	14705	4	20 lbs.
6" dia 2 1/2" w	14706	4	28 lbs.

Above with 1/2" axle

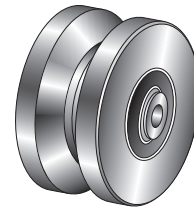
⊗ 8" dia 3 1/4" w 14707 4 38 lbs.

⊗ (1" axle not included)

6" dia 2 1/2" w 14706-DEL 4 27 lbs.

With Delrin bushing — Tested to exceed 3,500 lbs.
Includes 5/8" axle

V-GROOVE WHEEL Solid Steel



Size	Item#	Sack Qty.	Less Sack Weight Each	Sack Price Each
------	-------	-----------	-----------------------	-----------------

6" Solid Steel wheel 14706-10 4
4,000 lb. capacity each wheel

6" Solid S. power wheel 14706-EL 4
5,000 lb. capacity each wheel

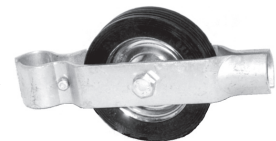
4" Solid S. power wheel 14705-10 4
3,000 lb. capacity each wheel

SEE IRON
ROLLING GATE HARDWARE

Solid Steel wheels are designed to be maintenance free on continuous applications.

- 4" wheel includes two - 2" sealed bearings with 1" axle and one 1/2" x 3.25" bolt with nut.
- 6" wheel includes two - 2.5" sealed bearings with 1.18" axle and one 5/8" x 3.25" bolt with nut.

SINGLE WHEEL CARRIER Weld on type - 2 piece



1 5/8" w6" wheel	14401	5	29 lbs.
1 7/8" w6" wheel	14411	5	30 lbs.
1 5/8" w8" wheel	14421	5	35 lbs.
1 7/8" w8" wheel	14431	5	36 lbs.

Includes Axle

CARRIERS ONLY No Wheels - 2 piece



1 5/8" w6" wheel	14441	5	15 lbs.
1 5/8" w8" wheel	14442	5	15 lbs.
1 7/8" w6" wheel	14451	5	15 lbs.
1 7/8" w8" wheel	14452	5	15 lbs.

8530 UNSWORTH AVE. SACRAMENTO, CA 95828-1009 1-916-381-4065	13111 DAHLIA ST. FONTANA, CA 92337-6902 1-909-350-9040	8937 SAN FERNANDO RD. SUN VALLEY, CA 91352-1410 1-818-504-3700	1265 N. CUYAMACA ST. EL CAJON, CA 92020-1549 1-619-449-0333	10010 PORTLAND AVE. TACOMA, WA 98445-3956 1-253-535-5500
---	--	--	---	--

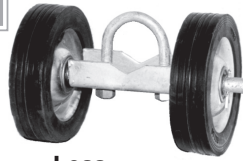
BFC

Carriers / Cantilever Rollers

DOUBLE WHEEL CARRIERS

(Light)

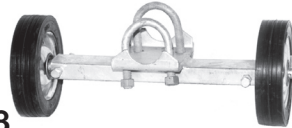
Clamp-on for 1 5/8 or 1 7/8



Size	Item#	Sack Qty.	Sack Weight	Less Sack Price Each	Sack Price Each
W/6" wheels	14641	4	28 lbs.		

(Regular)

Clamp-on for 1 5/8 or 1 7/8



6" wheels	14601	5	45 lbs.		
8" wheels	14602	5	60 lbs.		

(Heavy Duty)

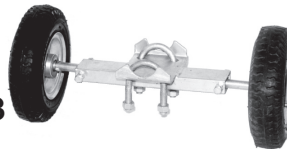
Clamp-on for 1 5/8 or 1 7/8



6" wheels	14621	NA	11 lbs.	NA	
8" wheels	14622	NA	12 lbs.	NA	

Rough Terrain

Clamp-on for 1 5/8 or 1 7/8



W/8" wheels (Pneumatic)	14600	NA	15 lbs.	NA	
----------------------------	-------	----	---------	----	--

V-Groove / Rubber Wheel

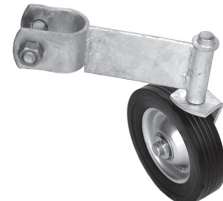
Clamp-on for 1 5/8 or 1 7/8



6" wheels	14624	4	48 lbs.	NA	
-----------	-------	---	---------	----	--

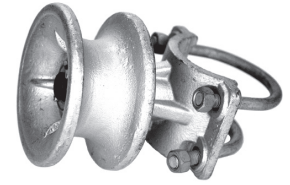
SWIVEL WHEELS

For Swing Gates



1 3/8"	14654	4	18.4 lbs.		
1 5/8"	14655	4	18.8 lbs.		
1 7/8"	14656	4	19.2 lbs.		
Flatback	14657	4	20.0 lbs.		

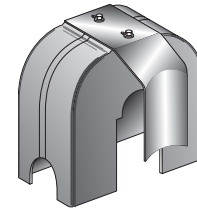
GALVANIZED IRON CANTILEVER Gate Rollers



Size	Item#	Sack Qty.	Sack Weight	Less Sack Price Each	Sack Price Each
Post x Roller 2 7/8" x 1 7/8"	14712	4	53.2 lbs.		
2 7/8" x 2 3/8"	14710	4	54.0 lbs.		
4" x 1 7/8"	14713	4	58.0 lbs.		
4" x 2 3/8"	14711	4	58.8 lbs.		

- Wheel covers required for all cantilever wheels.
— Sold separately —

UNIVERSAL CANTILEVER Wheel Covers



	Item#	Sack Qty.	Sack Weight	Price each
Plastic cover with pressed steel bracket	14722-10H	4	8 lbs.	
Pressed steel	14722-PS	4	20 lbs.	

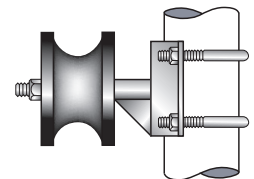
- Required for installation on all cantilever wheels.

NYLON CANTILEVER GATE ROLLER

4" x 2 3/8"	14711-15	4	44 lbs.		
-------------	----------	---	---------	--	--

Post x Roller

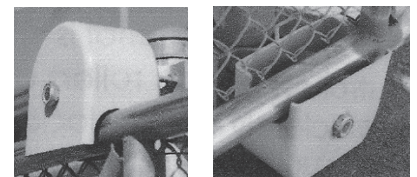
- A premium heavy duty wheel.
- Load rating of 2,200 lbs.



- Wheel covers required for all cantilever wheels.
— Sold separately —

PLASTIC CANTILEVER Wheel Covers

For Nylon Roller only



	Item#	Sack Qty.	Sack Weight	Price each
Plastic cover, Top	14722-T	4	6 lbs.	
Plastic cover, Bottom	14722-B	4	6 lbs.	

GATE SCROLL Three Piece Steel



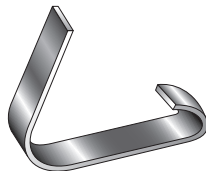
Size	Item#	Sack Qty.	Sack Weight	Less Sack Price Each	Sack Price Each
18"	13901	10	10 lbs.		
24"	13902	10	12 lbs.		
36"	13903	10	15 lbs.		
48"	13904	10	19 lbs.		

GATE SCROLL Aluminum



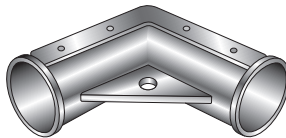
18"	13911	25	3 lbs.		
24"	13912	25	5 lbs.		
36"	13913	25	9 lbs.		
48"	13914	25	12 lbs.		

GATE CLIPS



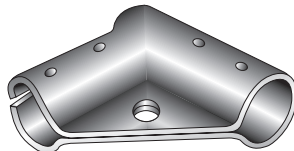
1 3/8" x 5/8"	14001	500	54 lbs.		
1 5/8" x 3/4"	14003	250	40 lbs.		

CORNER GATE ELLS Die Cast Aluminum



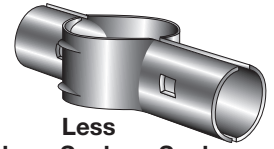
1 3/8" hexagon	16750	100	41 lbs.		
----------------	-------	-----	---------	--	--

CORNER GATE ELLS Pressed Steel



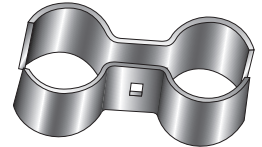
1 5/8"	16760	50	50 lbs.		
1 7/8"	16761	25	50 lbs.		

LINE RAIL CLAMP Pressed Steel without Bolts



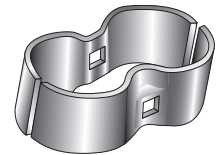
Size Post & Rail	Item#	Sack Qty.	Sack Weight	Less Sack Price Each	Sack Price Each
1 7/8" x 1 3/8" 5/16" x 2"	13410	100	72 lbs.		
bolt & nut required — ORDER SEPARATELY					
1 7/8" x 1 5/8"	13411	100	75 lbs.		
2 3/8" x 1 5/8"	13415	100	75 lbs.		
2 7/8" x 1 5/8" 5/16" x 2 1/2"	13416	50	41 lbs.		
bolt & nut required — ORDER SEPARATELY					

SADDLE CLAMP Pressed Steel without Bolts



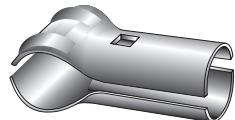
1 3/8" x 1 3/8" 3/8" x 1 1/4" carriage	16796	100	46 lbs.		
bolt & nut required — ORDER SEPARATELY					
1 5/8" x 1 5/8"	16797	100	61 lbs.		
1 7/8" x 1 7/8" 3/8" x 1 1/4" carriage	16798	100	76 lbs.		
bolt & nut required — ORDER SEPARATELY					

PANEL CLAMP Pressed Steel without Bolts



1 3/8" x 1 3/8" 3/8" x 2 1/4"	13401	100	40 lbs.		
bolt & nut required — ORDER SEPARATELY					
1 5/8" x 1 5/8" 3/8" x 2 1/2"	13402	100	50 lbs.		
bolt & nut required — ORDER SEPARATELY					
1 7/8" x 1 7/8" 3/8" x 3"	13403	100	60 lbs.		
bolt & nut required — ORDER SEPARATELY					

GATE BRACE CLAMP Pressed Steel without Bolts



1 3/8" x 1 3/8"	16790	100	25 lbs.		
1 5/8" x 1 5/8"	16791	100	30 lbs.		
1 7/8" x 1 7/8" 5/16" x 2 1/2"	16792	100	35 lbs.		
bolt & nut required — ORDER SEPARATELY					